

REHABILITATION OF FRANCIS SCOTT KEY BRIDGE
FROM ROSSLYN, ARLINGTON, VIRGINIA TO GEORGETOWN WASHINGTON, DC
DC Contract No.: DCKA-2014-C-0074

FAP No.: BH-1104 (013)

CONSTRUCTION MANAGER'S
WEEKLY PROGRESS REPORT
From 12/04/2016 to 12/10/2016

Project Website: www.keybridgeproject.com



1. EXECUTIVE SUMMARY

Project Description:

The AECOM Construction Management and Inspection team is providing construction and inspection services for the Rehabilitation of the Francis Scott Key Bridge over the Potomac River (Bridge No. 0007), G.W. Parkway, Whitehurst Freeway and the C & O Canal that includes the East Ramp Structure to the Whitehurst Freeway.

The scope of the construction work includes the following:

1. Installing pedestrian/bicycle detection loops and warning flashers on the Bridge at the ramp to east-bound Whitehurst Freeway.
2. Cleaning and painting the existing steel pedestrian railing on the bridge.
3. Removing the concrete bollards from the east sidewalk at the east ramp exit.
4. Removing and installing new street light poles on the bridge.
5. Removing and resetting portion of the precast concrete traffic barrier on the Bridge.
6. Repairing the precast concrete traffic barrier and grout pads.
7. Repairing the Northwest concrete traffic barrier end post.
8. Strengthening the deck overhangs with carbon fiber reinforced polymer bars.
9. Repairing the concrete wearing surface on the bridge.
10. Repairing grout pockets at the post-tensioned deck hold down bolts.
11. Replacing the non-armored expansion joint seal (B-0007 and East Ramp).
12. Replacing the armored expansion joint seals (B-0007 and East Ramp)
13. Overlaying the right lanes (inbound and outbound directions) on the bridge with a high molecular weight methacrylate resin (HMWM) overlay.
14. Milling and overlaying the Rosslyn approach structure with a very high early strength latex-modified concrete (LMC-VE).
15. Cleaning debris from all bridge deck drainage scuppers and pier chambers.
16. Removing and replacing the Bridge deck drainage downspout.
17. Rehabilitating the support for a 30-inch Washington Aqueduct water main on the bridge.
18. Repairing portions of the concrete encased and the reinforced concrete floor beams.
19. Cleaning and painting the exposed end of the steel floor beams.
20. Replacing failed concrete deck pedestals.
21. Replacing portions of the utility gallery floor slabs full depth.
22. Repairing portions of the concrete superstructure, including but not limited to: deck soffit, deck pedestals, spandrel arches, spandrel columns, main arches, diaphragm walls, deck slab, and arch struts.
23. Repairing portions of the concrete substructure, including the piers, abutments, abutment chambers, and wing walls.
24. Encapsulating the pier footings with fiber reinforced polymer jackets at the waterline.
25. Removing and replacing the fixed steel access ladder at North abutment.
26. Installing a new fixed steel access ladder at the South abutment.
27. Removing and replacing portion of chain link fencing (bridge access deterrent) on the main arches.
28. Cleaning the Bridge fascia with pressurized water.
29. Applying an anti-graffiti treatment to portions of the piers.
30. Removing and applying new pavement markings (B-0007 and East Ramp).
31. Maintenance of pedestrian and vehicular traffic during construction of the project, including temporary lane and sidewalk closures necessary to perform the work.

2. STATUS OF CONSTRUCTION / PROGRESS SUMMARY

Progress Summary:

1. Continued efforts to setup coordination meetings with Pepco.
2. Continued to update the RFI and submittal logs.
3. Continued to document and generate project meeting minutes.
4. Continued to receive and transmit RFI's and submittals to the appropriate discipline for review.
5. Continued to maintain project filing and document management systems (electronics).
6. Continued to maintain and manage the Project SharePoint.
7. Contractor is redesigning scaffold system for the suspended portion and changing the design safety factor from 4 to 6.
8. Continued erection of the scaffolding system at the North abutment for the non-suspended portion.
9. Resumed preparation of mock-ups for concrete repair application.
10. Contractor cored shotcrete sample panels and sent to DDOT lab for testing.
11. Contractor worked on color matching samples
12. Contractor received delivery of chutes.
13. Completed PCO-01 package. Package has been under review by Neil at DDOT.
14. Continued to update the project website.
15. Technopref took delivery of their barges and began working on setting them up on the river.
16. Next partnering meeting to be determined during the next level 2 partners meeting.
17. The team waits to review Contractor's submittal on means and method of an access point they had proposed to provide from the top of the bridge to the scaffolding.
18. Visit by DDOE to observe contractor turbidity monitor activities.

CM Community Outreach Activities

The team visited and communicated with the key stakeholders during the week to give them project status updates and identify any concerns that they might have about the project.

Site Visits:

- goPuff – Sean visited on 12/8 and spoke to Aramis Sandoval. Updated him on project progress. No major concerns at this time.
- Thompsons Boat Center – Sean visited on 12/8 to meet with Greg King, however he had to leave for a meeting so will reschedule for next week

Stakeholder Contact:

- Sean spoke with Greg King at Thompson Boat Center on 12/6 about timing of span/channel closures and effects on river traffic. Wants to meet to discuss impact on spring crew and rowing events
- Sean corresponded with Darla Jackson at CAG on 12/7. The CAG wants our team to do a presentation at their 1/24/2017 meeting
- Sean Confirmed with Darla Jackson on 12/9 and confirmed that we would do CAG meeting presentation

Notes:

- Communications is awaiting a decision on the scaffolding erection plan. Any plan that affects the sidewalks on the bridge will face pushback from the cycling community. The communications team needs to be engaged with DDOT and Technopref so that any impacts can be communicated to stakeholders in a timely manner and plans developed to detail any required mitigation on impacts.
- Request by Boaters Club for exchange of schedules to accommodate racing schedule in navigable section of river during racing/boating season.

Key Takeaways:

- Communications team will continue to develop relationships with key businesses near the bridge that can help us distribute project information to their customers
- Congestion from the mix of cyclists, vehicles and pedestrians continue to be a major issue. However AECOM developed a plan to resolve it. The plan was submitted to DDOT on November 18, 2016.
- PEPCO and DDOT coordination is still important as problems created by PEPCO's work may have negative repercussions for DDOT as opposed to PEPCO even though they may be at fault.

3. ISSUES / ACTION ITEMS

- **Ongoing Issues / Items:**
- Pepco Cable on the East Ramp Concrete Bent Columns; Pepco confirmed the ownership of top overhead wire overhanging East Ramp piers. DDOT is working with Pepco to determine the appropriate solutions.
- Action Items: NPS issued Limited Special Use permit, and verbally provided access to the river.
- **New Issues / Items:** None, except as noted elsewhere in this report.

4. MEETINGS / PROJECT COORDINATION

- Weekly coordination meeting with DDOT team, utility (Pepco) meetings and updates, project progress meeting with DDOT and the contractor.
- Conference call with the contractor when a physical meeting is not possible.

5. DAILY WORK PERFORMED**Monday 12/05/16**

1. Technopref was on-site working on their site staging area, and continued working on water access ramp. Also, did carpentry work for safety post near the docks. Hosted the weekly safety meeting.
2. Handon services working on limited schedule and awaiting the redesign of the scaffold system. Continued erecting scaffolding system at North abutment eastside and on East Ramp, Bent 16A wall.

Tuesday 12/06/16

1. Technopref was on-site working on their site staging area, and continued working on water access ramp. Technopref received the delivery of barges and were held in-place by vertical steel shafts - spuds. These spuds installations were performed with the use of a Rental Crane. Also Technopref's electrician was on site.
2. Handon services working on limited schedule and awaiting the redesign of the scaffold system. Continued erecting scaffolding system at North abutment eastside and on East Ramp, Bent 16A wall.
3. Fibwrap was on-site working on coring test samples for compressive strength testing from test panels cast on 11-29-2016. They also delivered the core samples to DDOT Lab for testing.

Wednesday 12/07/16

1. Technopref was on-site working on their site staging area continued working on barges setup. Also working on electrical connection preparing for Pepco main line connection.

2. Handon services working on limited schedule and awaiting the redesign of the scaffold system continued erecting scaffolding system at Westside and started at NE corner of North abutment.
3. Fibrwrap was on-site today to perform test samples at 48 degree F. ambient temp. for color approval. Sika Corp rep. on site to observe.

Thursday 12/08/16

1. Technopref was on-site working on their site staging area, installed water access Ramp from staging to barges. Prepared bearing location on staging area, lifted bridge beams 50ft long and placed on bearing at staging area and on steel plate welded on barge. Continued working on barges setup. Also working on electrical connection preparing for Pepco main line connection.
2. Handon services working on limited schedule and awaiting the redesign of the scaffold system continued erecting scaffolding system at Westside and started at NE corner of North abutment.
3. Fibrwrap was on-site today to cut Test Panels to show the cross section reinforcement cover verifying method of placement to be adequate for acceptance.

Friday 12/09/16

1. Technopref was on-site working on their site staging area, continued working on water access Ramp from staging to barges. placed on bearing at staging area and on steel plate welded on barge. Continued working on barges setup. Also working on electrical connection preparing for Pepco main line connection.
2. Handon services working on limited schedule and awaiting the redesign of the scaffold system continued erecting scaffolding system at Westside and started at NE corner of North abutment.

6. INSPECTION & MATERIAL TESTS PERFORMED

- Pay items worked this week are:
 - 000 003 Employee Training. We were on site to observe Employee Training.
- Contractor has been working on full schedule.

7. RFI's / SUBMITTALS

- **Requests For Information:**
 - None
- **Submittals:**
 - o Submittal No.025A – Temporary Pedestal Support System
 - Forwarded to JMT.
 - o Submittal No.059 – MasterKure CC 200 WB.
 - Forwarded to QA/QC DDOT.
 - o Submittal No. 061 – Site Specific Safety Plan Addendum 1: Water Safety Plan
 - Forwarded to AECOM

- Submittal No. 062 – Primavera Schedule Update No.01 (November 2016)
 - Forwarded to OC&L

8. CHANGE ORDERS/TASK ORDERS

- Negotiations were completed on November 02, 2016 with contractor for CO #1 items. Completed PCO-01 package. Under review by Neil from DDOT.

9. DBE or CBE PARTICIPATION SUMMARIES

- AECOM DBE Activity:
 - CSMI
 - Project Public out Reach.
 - CKI
 - Aid to Construction Management and Inspection Services
- Technopref
 - Intelect Corporation
 - Scaffolding erection
 - Handon Diving Services Inc.
 - Capsulation of the piers

10. ACCIDENTS / INCIDENTS

- There were no reported personnel or safety accidents within the limits of the project during this reporting period

11. PHOTOS OF WORK PERFORMED THIS PERIOD



Scaffolding erection at N. abutment.



Assembling sections of the water access ramp



Assembling sections of the water access ramp



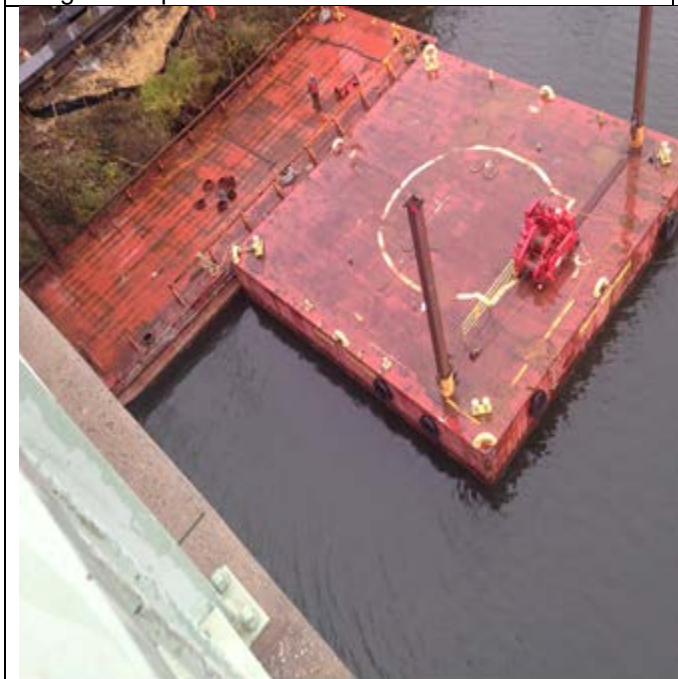
Arrival of barges from Baltimore.



Barges setup



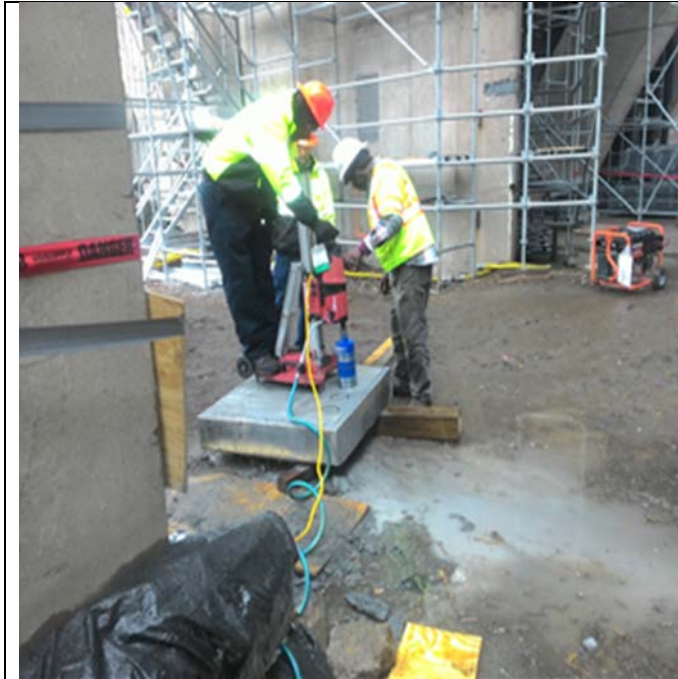
Spuds installation



Barges setup

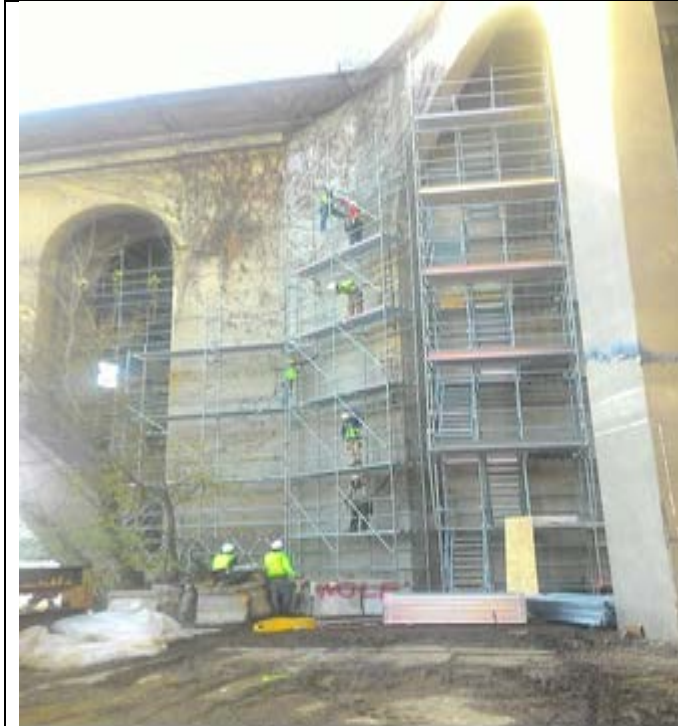


Barges setup



Fibrwrap core test samples from Test Panel at N. Abutment on East Ramp, Bent 16A

Fibrwrap core test samples from Test Panel at N. Abutment on East Ramp, Bent 16A



Erecting scaffold system at North abutment

Barges setup



Fibrwrap color matching samples with Sika 211
Sample at Bent 16A



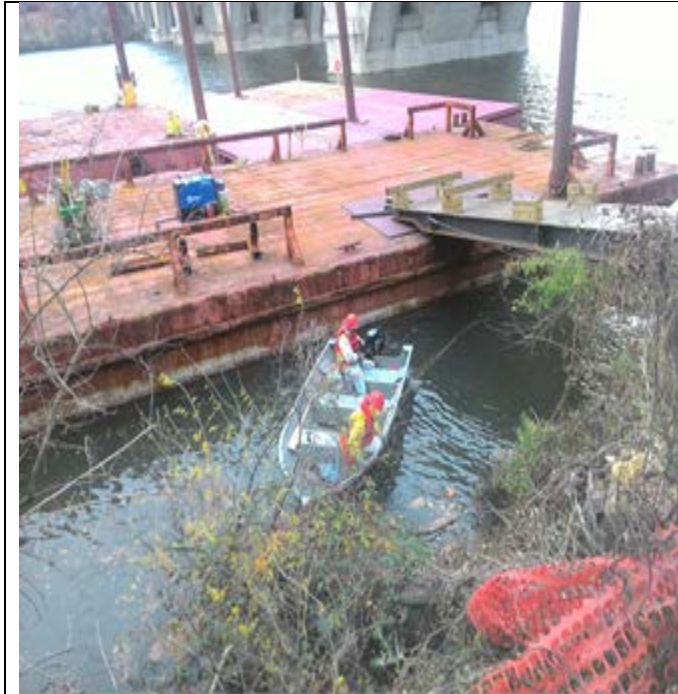
Technopref received Chutes for debris



Fibrwrap strip Test Panel form with reinforcement to
cut sectional for application



installation of water access ramp



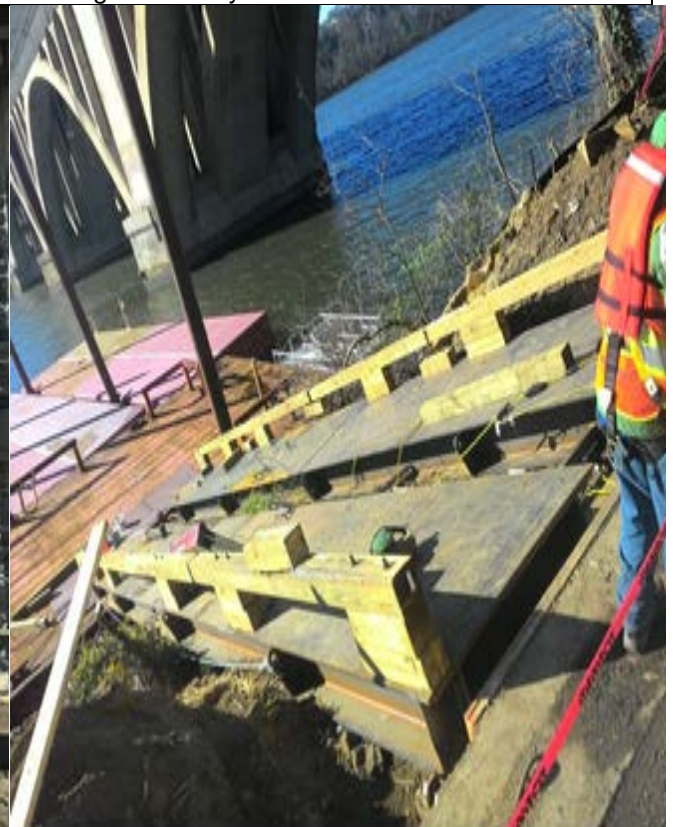
installation of water access ramp



Erecting scaffold system at North abutment



Erecting scaffold system at North abutment



installing safety railing on water access ramp